



eMedia Card Designer Reinstallation procedure

Summary

This document is provided with a reinstallation tool, named **Reinstall.exe**, and the two files must be provided together.

The reinstallation tool is provided to you by Mediasoft Technologies to help you to transfer your eMedia Card Designer professional version from one computer to another one, as the Registration Key depends on the computer on which eMedia was installed.

Use only this reinstallation tool if you have a **professional version** of eMedia Card Designer. If you have a standard or trial version of the software, you doesn't need anything: simply install eMedia Card Designer on your new computer.

Procedure

You currently have a professional version of eMedia, and want to transfer the license to another computer: please follow the procedure below. Keep in mind that once the reinstallation process is finished, you will only have one professional version of eMedia.

Step 1: Install your new eMedia Card Designer software

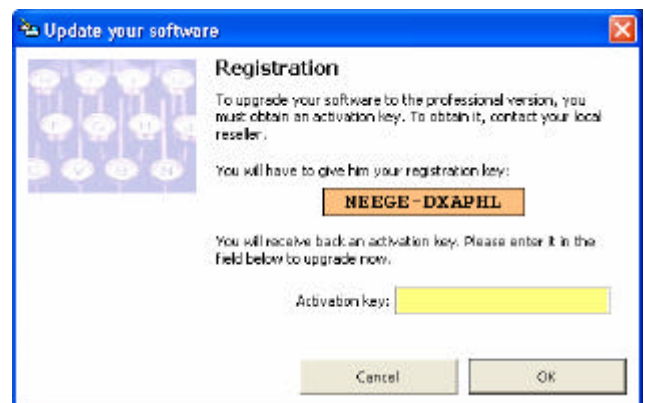
1.1. On the target computer, on which you want to use eMedia pro, first install the software from the installation CD.

1.2. Launch eMedia,

Select the "Upgrade" command in the "Help" menu,

Click on the "Register..." button,

In the "Update your software" dialog box (see picture 1 on the right), note the new Registration key.



Picture 1: Registration window

Step 2: Create the Reinstallation key

- 2.1. On the computer which currently holds the eMedia professional version, stop eMedia if the software is running.
- 2.2. Copy the Reinstall.exe file **in the eMedia installation folder**. It is very important that the Reinstall.exe file will be in the eMedia installation folder. Otherwise, the tool refuses to compute the reinstallation key.
- 2.3. Launch Reinstall.exe.

Select your preferred language in the window (see picture 2 on the right), then click on the "Next" button.



Picture 2: language selection

- 2.4. Read carefully the instructions. There are three pages of instructions. On each page, click on the "Next" button to continue (see picture 3 on the right).



Picture 3: instructions (page 1/3)

- 2.5. Select the eMedia version which is installed on this computer, by clicking the corresponding option button, then click on the "Next" button to continue. (see picture 4 on the right).



Picture 4: eMedia version selection

- 2.6. Everything is ready. The eMedia Reinstallation tool is waiting for your confirmation.

If you really want to transfer the license, enter "Yes" in the text-box (see picture 5).

Then, click on the "Next" button.



Picture 5: Confirmation window

2.7. The Reinstallation key appears, while the eMedia Reinstallation tool returns your current eMedia version to a standard version.

Note the key obtained.

The tool creates a text-file, too. Located in the root folder of the C: drive and named eMedia.txt, it contains all the needed information to continue the transfer process.



Picture 6: Reinstallation key

Step 3: Determine if you are eligible for an Activation key

IT IS NOT POSSIBLE TO OBTAIN AUTOMATICALLY A NEW ACTIVATION KEY FOR VERSION 5.0 IF YOU OBTAINED A REINSTALLATION KEY FOR VERSION 3.x OR 4.x AT STEP 2 ABOVE.

The Activation key will be given if you transfer your license from version 3.x or 4.x to version 3.x or 4.x, or if you transfer your license from version 5.0 to version 5.0

If you want to transfer a version 3.x or 4.x to a version 5.x, please refer to the instructions available on the web site at the following URL:

<http://www.emedia-cards.com/download/upgrade>

Once your new Activation key obtained, please continue the procedure to step 5 below.

Step 4: Obtain your new Activation key

4.1. Using an internet browser, go to the eMedia Reinstallation web page. The URL of this page is: <http://www.emedia-cards.com/us/reinstall.htm>. You may, for that purpose, click on the "Activate" button at the bottom left corner of the eMedia Reinstallation tool window (see picture 6 above).

4.2. Once the page displayed, enter the information you obtained:

Enter in the "Reinstallation key" field the key obtained from the Reinstallation tool at step 2.7. (see picture 6),

Enter in the "Registration key" field the new Registration key obtained from your new eMedia installation at step 1.2. (see picture 1),

Then, click on the "Submit" button.

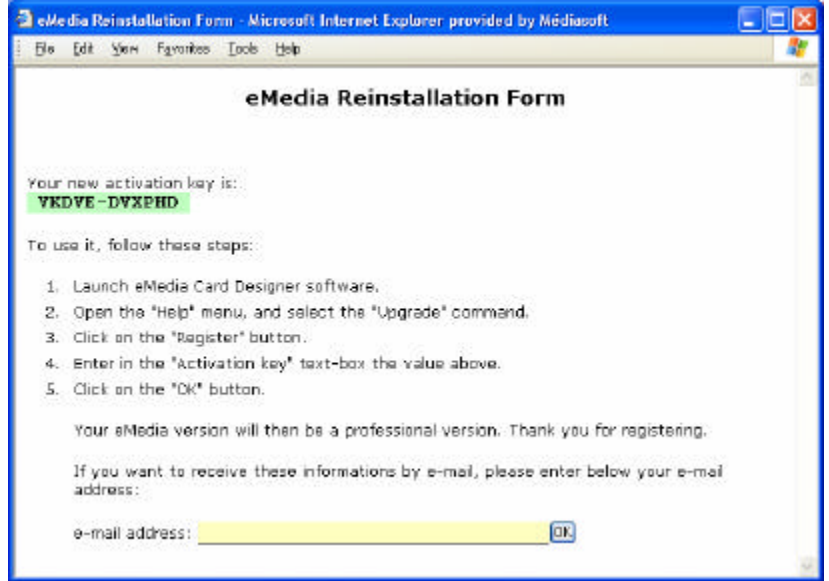


Picture 7: eMedia Reinstallation web page

4.3. The web page displays your new Activation key. This key corresponds to the new Registration key for your new computer.

Note this key (see picture 8).

For your convenience, you may enter your e-mail address in the text-box at the bottom of the page, then click on the "OK" button: the internet site will then send you a confirmation e-mail with the new Activation key.



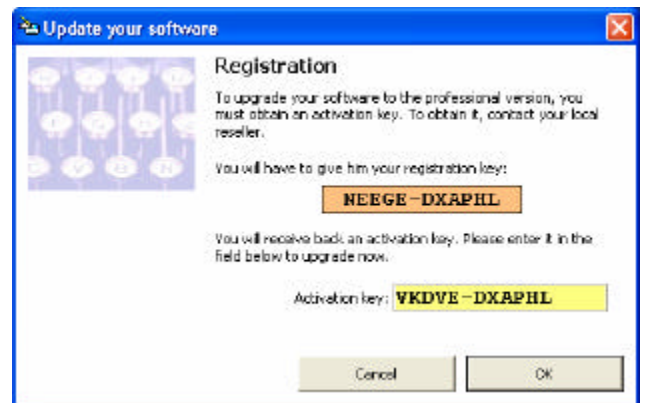
Picture 8: new Activation key

Step 5: activate your new computer

5.1. On your new computer, on which you obtained the Registration key, open the "Update your software" dialog box from the "Upgrade" command of the "Help" menu (see picture 9).

Enter in the "Activation key" field the key obtained from the eMedia Reinstallation web page at step 4.3.

Click "OK", eMedia tells you that you now have a professional version.



Picture 9: entering the new Activation key

Questions and answers

Is the Reinstallation tool secure? I don't want my license to be lost.

Yes. It has been fully tested and is used by our customers. The Reinstallation tool only deletes the license on a computer after displaying the Reinstallation key, so in case of error, you keep your professional version. And, in the worst case, there are ways to retrieve the initial information...

Why is the procedure so complex?

You only have one license to use eMedia pro. So, if you want to transfer this license, you must send us a proof of your professional version uninstall. The Reinstallation tool is provided for this purpose. The Reinstallation key *is* this proof.

May I reuse a Reinstallation key?

No, the web site delivers only one Activation key for each Reinstallation key entered. This prevents users to make multiple activations from one license.

Why must I use a web page instead of a single software?

The web server is the only way to assume that a Reinstallation key is only used once.

Are the Registration / Activation / Reinstallation key unique?

Yes, because they depend on your hardware and software configuration, the date and time, and randomly generated values. And, as these keys are results of calculations, it is not possible from these keys to retrieve all the initial values.

Contact

Should you have questions regarding this reinstallation procedure, please send us an e-mail: support@emedia-cards.com or visit our website: <http://www.emedia-cards.com>.